

EGMC (SEN)

N51 34.22 E000 41.60 **SOUTHEND** 55ft AMSL

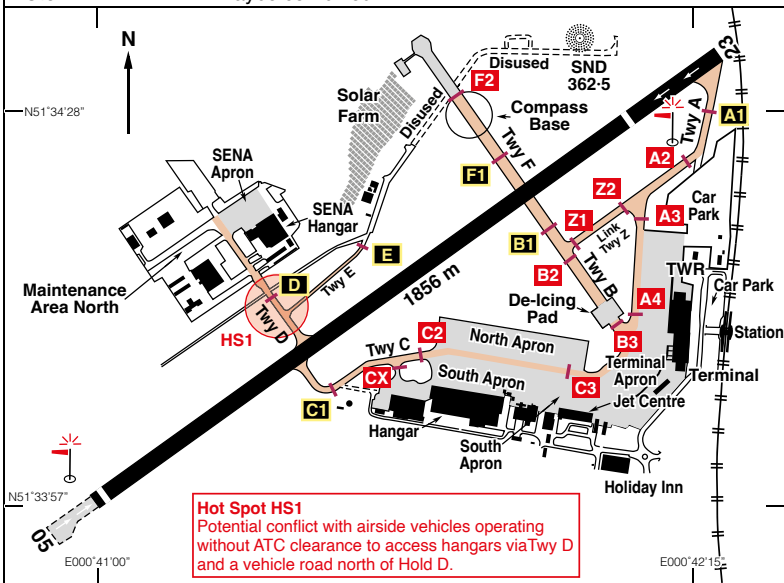
1.5 nm N of Southend. 31 nm E of City of London.

c/s Southend APP/ RAD 130-780 (LARS) | RAD DIRECTOR 128-965 as directed

TWR 127-730 | ATIS 136-055 | NDB 'SND' 362-50 (On A/D)

ILS/DME Rwy 05 (053°M) 'I SO' 111-35 | ILS/DME Rwy 23 (233°M) 'I ND' 111-35

Note: TWR/APP/RAD maybe combined.



Rwy	Dim(m)	Surface	TORA(m)	LDA(m)	Lighting
05/23	1856x36	Asphalt	05-1739 23-1739	05-1604 23-1604	Ap Thr Rwy PAPI 3.5° RH Ap Thr Rwy PAPI 3°

Rwy 05 Take-off from intersection at Hold C - TORA 1016 m.

Rwy 05 Take-off from intersection at Hold D - TORA 978 m.

Rwy 23 Take-off from intersection at Hold B - TORA 1182 m.

Op hrs: 0630-2100. **AD Strictly PPR** Extensions may be available upon request.

Landing Fee: Up to 1.5 tonne £28 + VAT; 1.6-2.5 tonne £56 + VAT. (Surcharge 2300-0600) Parking on north apron is free for first 2 hrs then £15 per 24hrs thereafter.

Hangarage: By arrangement with London Southend Jet Centre.

Maintenance: Available.

Customs: H24.

Remarks: Operated by London Southend Airport Co. Ltd., Southend Airport, Southend-on-Sea, Essex SS2 6YF.

Pilots and aircraft operators operating into London Southend Airport are deemed to have read and accepted the London Southend Airport 'Terms and Conditions of Use' and to be operating in accordance with them.

continued

Remarks (continued):

These are downloadable from: -

<https://londonsouthendairport.com/corporate-and-community/doing-business-with-us>
or by Phone: 01702 538544.

VFR traffic contact ATC at least 5 minutes prior to reaching abeam any of the VRPs. Pilots wishing to make a standard overhead join are to request this on initial contact. All training flights and non radio aircraft PPR.

Flight within the Southend CTR/CTA are governed by the regulations applicable to Class "D" Controlled Airspace.

Pilots operating in the vicinity of, but intending to remain outside the Southend CAS and maintaining a listening watch only on Southend Radar frequency 130.780 are encouraged to select SSR code 5050. Selection of the code does not imply the provision of any form of Air Traffic Service, see page 32.

All IFR departures should request engine start with the tower.

Visiting Pilots must 'book out' by telephone with ATC prior to departure.

Uncontrolled crossing must be used when walking between north apron and south side stands. Walkway can be identified by the green pathway between stands 13/14.

High visibility clothing mandatory on the apron and manoeuvring areas.

Handling compulsory for visiting aircraft over 2.5 tonnes.

Handling Services provided by London Southend Jet Centre, Tel: 01702 538600, Email: ops@londonsjc.com

GA parking normally on the north apron. Aircraft should expect to be greeted by a marshaller.

Circuit height 1000ft aal, variable circuits as instructed by ATC.

Helicopter circuits as directed by ATC. Helicopters must obtain specific clearance to cross the runway. During Low Visibility Procedures any helicopter movements will be to/from the runway.

Warnings: Bird Hazard: Increased bird activity may be encountered on Rwy 05/23 approaches during spring and autumn due to agricultural activity.

Accommodation: Holiday Inn Hotel.

Restaurant: Holiday Inn Hotel; Coffee Shop in terminal, Fast food Restaurant by entrance and Flying Clubs.

Car Hire: Avis 01702 421828; Enterprise 01702 522822; National 01268 772774; Hertz 01702 680108.

Taxis: Available outside Terminal or 01702 334455.

Rail: Airport Station adjacent to Terminal. Services direct to London Liverpool Street.

Fuel: 100LL, Jet A1.
All major Cards.
Duty Free Fuel available.

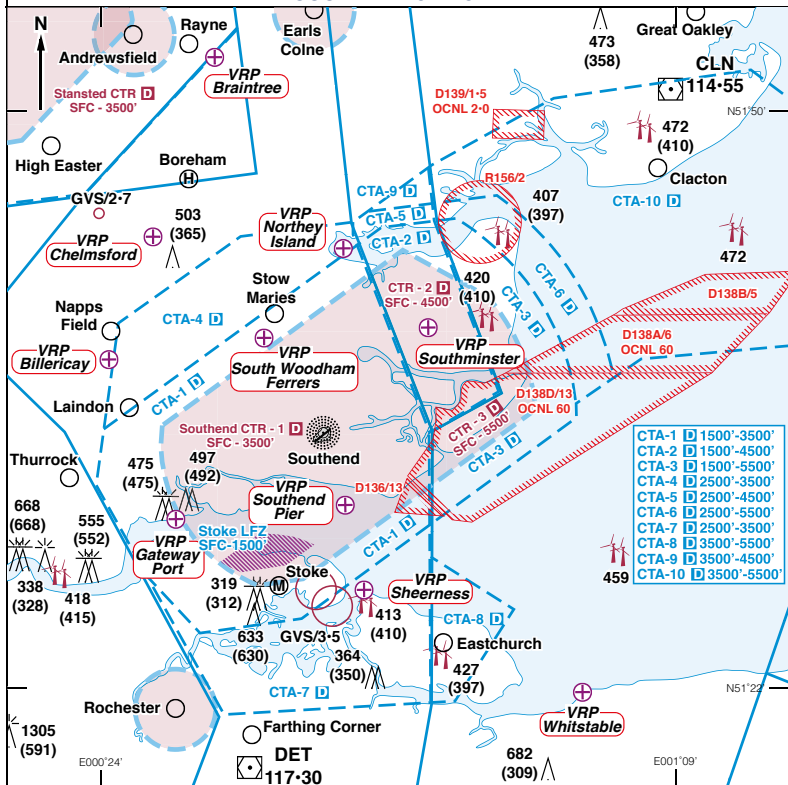
Tel: 01702 538500 Switchboard
01702 538420 ATC
01702 608401 AFS
01702 538600 London Southend Jet Centre
01702 538578 Operations/Commercial aviation handling

Fax: 01702 538501 Admin

Email: Isaairtraffic@LondonSouthendAirport.com (ATC)
Isaenquiries@LondonSouthendAirport.com (Admin)
ops@londonsjc.com (London Southend Jet Centre)
Isaoperations@starhandling.com (Ops/Handling)

Website: www.londonsouthendairport.com

SOUTHEND CTR/CTA



VRP

Co-ordinates

Billericay Lake Meadows Park	N51 38.00 E000 25.00
London Gateway Port	N51 30.28 E000 30.18
Northey Island	N51 43.33 E000 43.32
Sheerness Docks	N51 26.82 E000 44.68
South Woodham Ferrers Sewage Works	N51 38.68 E000 36.10
Southend Pier Seaward End	N51 30.90 E000 43.32
Southminster Lakes	N51 39.47 E000 49.82
Whitstable Harbour	N51 21.80 E001 01.60