

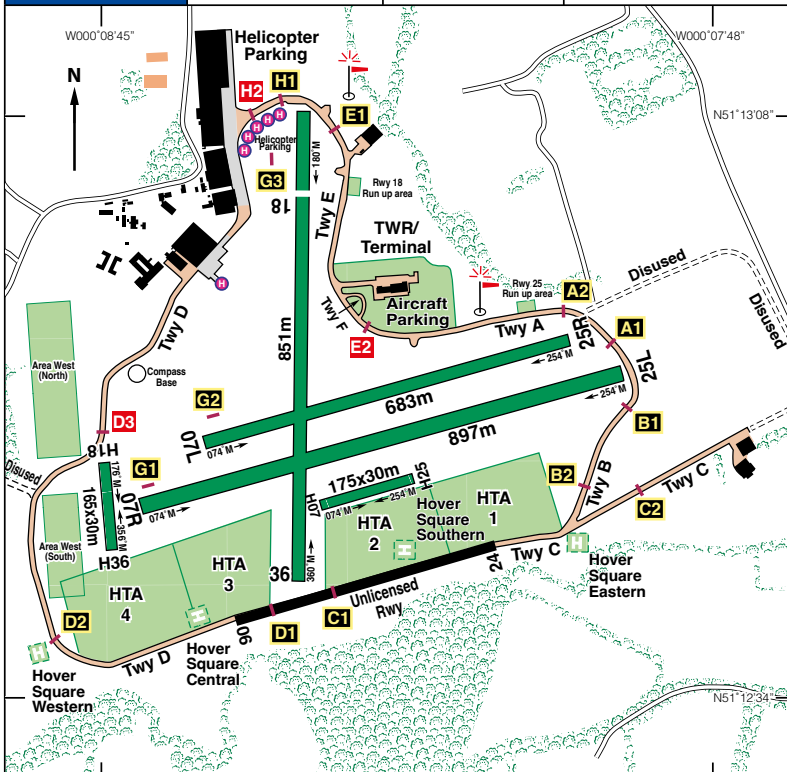
**EGKR  
REDHILL**

N51 12.82 W000 08.32

222ft AMSL

1.5 nm SE of Redhill.

**c/s Redhill Tower** 119-605 0845-1715 **ATIS** 125-305 H24



Rwy	Dim(m)	Surface	TORA(m)	LDA(m)	Lighting
18/36	851x25	Grass	18-851	18-699	Nil
			36-851	36-851	Nil
07R/25L	897x30	Grass	07R-897	07R-897	Thr Rwy APAPI 4.25°
			25L-897	25L-897	Ap Thr Rwy PAPI 3.5°
07L/25R	683x23	Grass	07L-683	07L-683	Nil
			25R-683	25R-683	Nil
					ABn Wh/Gn

**Op hrs: PPR.** Summer: 0900 - 1900. O/T PPR 24 hrs. Winter : 0900 - 1700.

**Landing Fee:** See website. **Customs:** Inbound 4 hrs PNR.

**Hangarage & Maintenance:** EBG Helicopters, Tel: 01737 823282.  
 A2B Heli (Maintenance) Ltd. Tel: 0203 9887660.  
 Helicopter and aviation services T/A Helipad, Tel: 01202 835385.

*continued*

**Remarks:** Operated by Redhill Aerodrome Ltd., Terminal Building, Redhill Aerodrome, Surrey RH1 5YP. Licensed Aerodrome/Heliport. PPR via website or telephone.

Flex wing microlights prohibited.

Use of the A/D by acft not equipped with a serviceable transponder is subject to prior approval from the A/D licensee. Rwy 18/36 is not available to acft that are not equipped with a serviceable transponder. High visibility clothing required on the manoeuvring area. Intensive helicopter operations.

**No deadside**, helicopters fly circuits on the opposite side of runway to fixed wing acft. Unmarked taxiways should not be used without ATC permission. Visual Reference Points (VRPs) – see below and Chart opposite. All procedures are based on Redhill QNH, QFE on request.

**Circuits at:** Fixed wing and Helicopters 1200ft QNH.

Police and Air Ambulance ops H24.

#### **Joining/Departure Procedures:**

Full details of arrival, departure and circuit patterns are available on A/D website. All aircraft must enter and leave ATZ via one of the following VRPs:

Junction 7 M25/Junction 8 M23 N51 15.83 W000 07.68,  
Godstone (Junction of A25/B2236 roads) N51 14.83 W000 04.02;  
Buckland N51 14.40 W000 14.75,  
Godstone Railway Station N51 13.08 W000 03.07,

Fixed-wing aircraft join at 1400ft QNH. If required to join overhead - enter the ATZ on the runway QDM remaining within the fixed-wing circuit area. When instructed, descend to circuit height and join the visual circuit pattern. Depart not above 1400ft QNH until passed the appropriate VRP.

Helicopters join at 1200ft QNH and enter the circuit pattern via the appropriate VRP or outside the Gatwick CTA. Depart between 700ft & 1200ft QNH.

When Rwy 18/36 is in use, helicopters joining from the east may be instructed to route from Godstone Station to the eastern aerodrome boundary at 700ft QNH.

**Noise Abatement:** Always use best rate of climb.

**Fixed-wing:** After departing from Rwy 07L/R aircraft must climb straight ahead, tracking the extended centre-line, until passed Henhaw Farm before turning on track; After departing from Runway 25L/R aircraft must climb straight ahead, tracking the extended centre-line, until reaching Benting Wood before turning on track. Full Noise Abatement procedures can be found at [www.redhillaerodrome.com](http://www.redhillaerodrome.com).

#### **Landing Fees:**

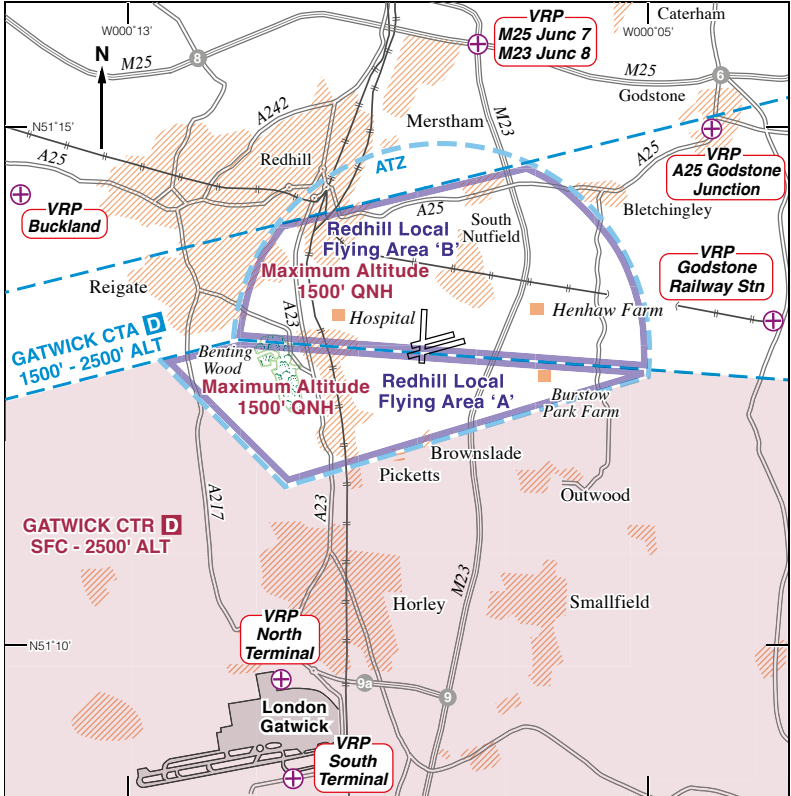
Please use Aerops APP or telephone the duty ARFFS crew 01737 821805.

**Restaurant:** Nil. New facility due to open April 2024.

**Fuel:** 100LL. Jet A1.  
Tel: 07751 566771 or 01737 821805.  
Visa, Mastercard.

**Tel:** 01737 823377 Admin; 821802 ATC  
**Tel:** 01737 822947 ATIS (H24).  
**Email:** [atc@redhillaerodrome.com](mailto:atc@redhillaerodrome.com)  
**Website:** [www.redhillaerodrome.com](http://www.redhillaerodrome.com)

## REDHILL ATZ/LOCAL FLYING AREA



The southern half of Redhill Aerodrome lies within the Gatwick CTR and the northern half lies beneath the Gatwick CTA. During the hours of watch of Redhill ATC, VFR & SVFR flights, without reference to Gatwick ATC, may be made within the LFA subject to compliance with the following restrictions and procedures:

### Within Gatwick CTR - Area 'A'

- Clear of cloud, surface in sight.
- Maximum altitude 1400ft QNH.
- VFR weather minima: Minimum visibility 5000m, heli minimum visibility 1500m.
- SVFR weather minima: Fixed wing minimum visibility 3000m and or cloud ceiling (BKN) 700ft. Helicopter minimum visibility 1500m and or cloud ceiling (BKN) 700ft.

Limits of circuit:

- West Middle of Bentsing Wood;
- North Redhill – Bletchingley road (A25);
- East Outwood – Bletchingley road;
- South Picketts and Brownslade farms.

### Area 'B' Max altitude 1400ft QNH.

**Note:** All aircraft, including those that may be in radio contact with Gatwick ATC, must obtain clearance from Redhill ATC 5 mins prior to ETA.

**Arr/Dep** - Aircraft joining or leaving Redhill ATZ/Local Flying Area must do so north of the Gatwick CTR. Joining procedures are detailed on previous page. Outbound aircraft will not normally be routed via a VRP being used by inbound aircraft.