

EGTC

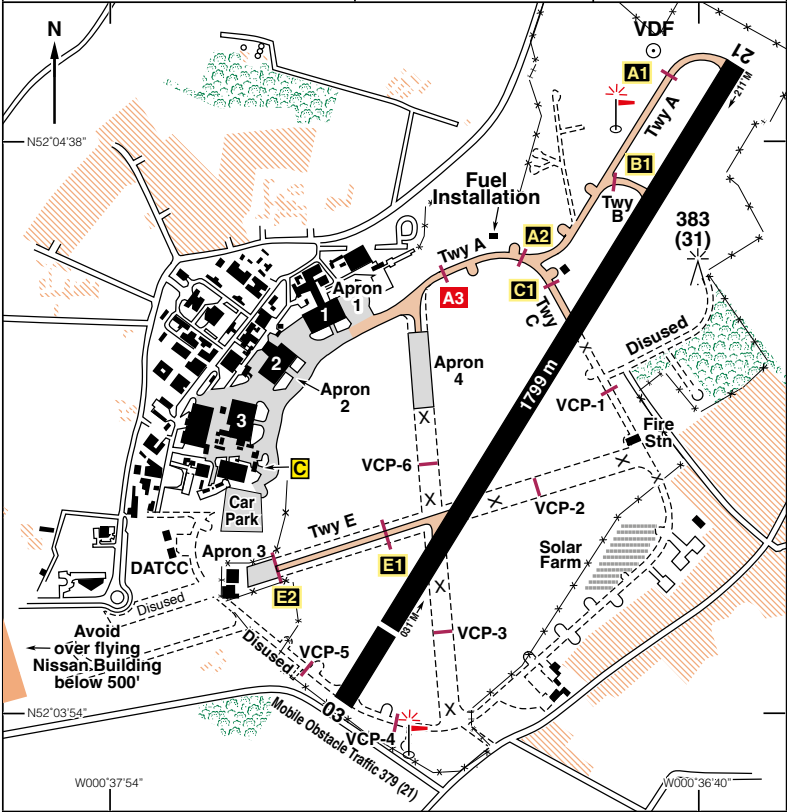
CRANFIELD

358ft AMSL

7 nm SW of Bedford.
6 nm E of Milton Keynes.

c/s Cranfield | APP 122•855 | TWR 134•930 | Dep ATIS 121•880 | VDF 122•855

NDB 'CIT' 850 (211°M/3-7 nm to A/D) | VOR/DME 'DTY' 116•40



Rwy	Dim(m)	Surface	TORA(m)	LDA(m)	Lighting
03/21	1799x45	Asphalt	03-1799 21-1672	03-1593 21-1672	Ap Thr Rwy PAPI 3° RHS Ap Thr Rwy PAPI 3°

Take-off: Rwy 03 from intersection with Hold D1 TORA 1380 m
 Rwy 21 from intersection with Hold C1 TORA 953 m
 Rwy 21 from intersection with Hold B1 TORA 1306 m

continued

EGTCN52 04.33 W000 37.00 **CRANFIELD** 358ft AMSL**Op hrs:** Strictly PPR Mon-Fri 0800-1830; Sat, Sun & PHs 0900-1800.**Landing Fee:** Paid via accounts on Tel: 01234 758151 or the airport website.**Customs:** Minimum 4 hrs PNR to ATC; 12 hrs for Common Travel Area.**Hangarage:** Limited. **Maintenance:** Available - Various Organisations.**Remarks:** Operated by Cranfield University, Cranfield Airport, Cranfield, Bedford MK43 0AL. Non-radio aircraft prohibited.

Strictly PPR to any aircraft requiring Instrument Approach training or non-based aircraft requiring Circuit training and does not accept diversions or nominations as a flight plan alternate aerodrome without approval from the Aerodrome Authority.

High visibility clothing mandatory whilst airside.

No standard overhead joins, and no deadside due to circuits in both directions.

All VFR fixed wing departures/arrivals are to ensure that the helicopter circuit is not infringed on departure/arrival.

Circuits: Day – Fixed wing 1000ft QFE. Night - 1200ft QFE.

All VFR traffic should join circuit via VRPs:

Stewartby Brickworks N52 04.40 W000 31.05 , Woburn N51 59.40 W000 37.15 or Olney Town N52 09.20 W000 42.10 Rwy 03 only.

Helicopter Operations - All helicopters should expect to join via published VRPs and operate to/from the main runway, integrating with fixed wing traffic when required.

Instrument Training: Opposite Direction Runway Operations - Lack of positive clearance - Training aircraft carrying out instrument approaches to Rwy 21 whilst Rwy 03 is in use should go around and fly directly over Rwy 21/03 NOT below 1000ft agl (1400 ft Alt) if no positive clearance is received.

Avoid overflying all buildings and structures located up to 1500m west of disused runway intersection below 500ft aal.

Caution: Due to drainage ditches, all fixed wing aircraft entering/exiting the grass area via Twy A between Twy D and ATC are to use the concrete entry/exit points.

Pilots are advised to exercise caution as this aerodrome has a deer hazard, particularly during the periods of dawn and dusk/official night.

Pilots are requested to report the location of any animals on the aerodrome to ATC.

Be aware of occasional light acft and heli activity from Salford Helipad (N52 02.37 W000 38.68); Hulcote Farm (N52 02.18 W000 37.10) and Helimech Helipad (N52 01.87 W000 36.88).

Restaurant: Various catering facilities on Cranfield University Campus available.**Car Hire:** Longmarsh, Tel: 01908 377577. Europcar, Tel: 01908 373407.**Taxi:** JT Cars, Tel: 01234 750005. Eezy Cabs, Tel: 01908 218218.**Fuel:** 100LL, Jet A1. Diners, Visa, Mastercard, American Express.
All fuel request via Mob: 07900 738194 and not via ATC.**Tel:** 01234 750005 ATC,
01234 758114 Handling
Email: airport@cranfield.ac.uk
Website: www.cranfieldairport.com