

EGNC

CARLISLE

190ft AMSL

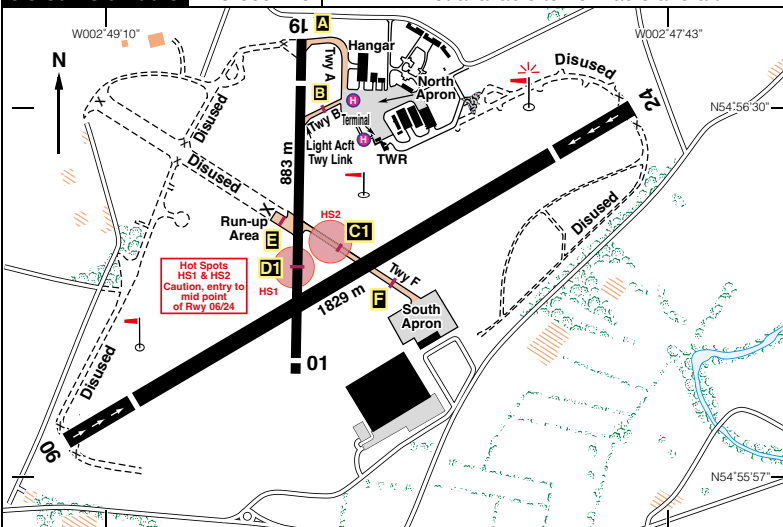
N54 56.25 W002 48.55

5 nm ENE of Carlisle.

TLA 113-80 152 38-6

c/s Carlisle Radio 123-605 A/G

A/D not available to non radio aircraft



Rwy	Dim(m)	Surface	TORA(m)	LDA(m)	Lighting
01/19	883x23	Asphalt	01-761 19-883	01-761 19-762	Nil Nil
06/24	1829x30	Asphalt	06-1690 24-1690	06-1490 24-1446	Thr Rwy PAPI 3.5° Ap Thr Rwy PAPI 3.25°

Op hrs: PPR 0900-1800 and by arrangement.

Landing Fee: Fees and charges available on request. **Customs:** Nil.

Hangarage: Limited. **Maintenance:** Available, Tel: 01228 573990.

Remarks: Operated by Stobart Air (UK)Ltd, Carlisle Airport, Carlisle, CA6 4NW. Non radio aircraft strictly PPR. Circuits 1000ft, normally LH. Light Acft parking stands 1A to 1H, nose wheel on Tee bar. Light acft pre-flight checks are conducted on the run-up area, NW of Holding Point 'E'. Aircraft transiting or in the vicinity of the AD outside published Op hours should listen out 123-605. High visibility clothing mandatory on the Apron. Danger Area EGD510 - 5 nm NE of aerodrome. SUAAIS available from Carlisle APP. All visiting aircraft to go to the South Apron via Twy F. All aircraft parked on the South Apron are to perform power checks on the South Apron and **NOT** on Twy F or at the intersection with Twy F on the South Apron.

Warnings: High ground to the SE of the aerodrome between 7 & 10 nm rising to 1847ft aal, 2037ft amsl.

Fuel: 100LL, Jet A1 - by arrangement. Multi.

Tel: 01228 573641 Operations
Website: www.carlisleairport.co.uk