

EGNS (IOM)

N54 05.00 W004 37.40

ISLE OF MAN

53ft AMSL

6 nm SW of Douglas.

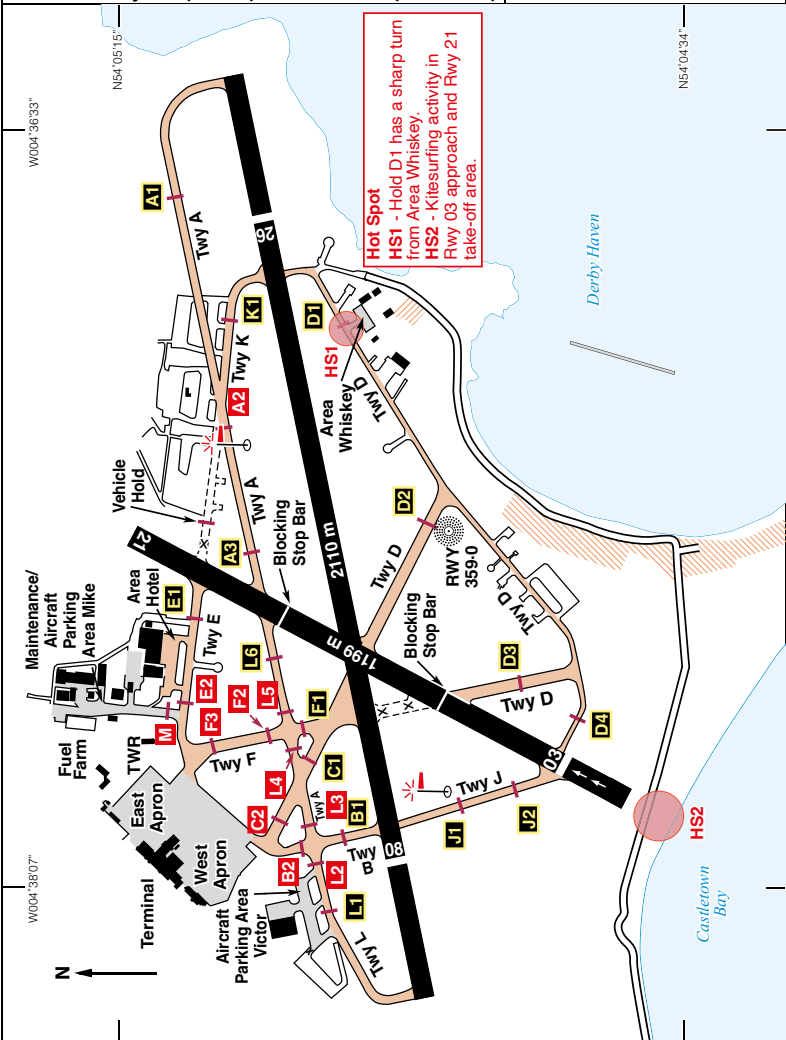
IOM 112-20 080 5-1

c/s Ronaldsway APP 135-905 TWR 119-005 ATIS 123-880

RAD 135-905, 120-855** 125-305** ** When directed

NDB 'RWY' 359-0 (On A/D) ILS/DME Rwy 26 (262°M) I-RY 111-15

ILS/DME Rwy 08 (086°M) I-RH 111-15 (QFU 082°)



Revised 21/03/2024.

EGNS (IOM)N54 05.00 W004 37.40 **ISLE OF MAN** 52ft AMSL

Rwy	Dim(m)	Surface	TORA(m)	LDA(m)	Lighting
03/21	1199x46	Asphalt	03-1199 21-1105	03-1105 21-1105	Thr Rwy PAPI 3° Ap Thr Rwy PAPI 3.5° RH
08/26	2110x46	Asphalt	08-1877 26-1909	08-1586 26-1613	Ap Thr Rwy RCL PAPI 3.5° Ap Thr Rwy RCL PAPI 3°
Rwy 08 Take-off from intersection with Twy B TORA 1496m					
Rwy 26 Take-off from intersection with Twy K TORA 1469m					

Op hrs: Mon-Sat 0615-2045, Sun 0700-2045. Other times by arrangement.**Landing Fee:** Landing Fee: Up to 500 kg £12.42; 501-2000 kg £24.84; 2001-3000 kg £49.56; Over 3000kg call. Inc VAT.

Pay at time of landing, light aircraft - max 3000 kg 20% discount.

Customs: A/D hrs, Tel: 01624 648110, **Fax:** 01624 661650. PNR by 1600 previous day.**Hangarage:** Nil.**Maintenance:** Limited.**Remarks:** Operated by The Isle of Man Government Department of Infrastructure, Airport Division, Isle of Man Airport, Ballasalla, Isle of Man IM9 2AS.

Flights within the Isle of Man CTR/CTA are governed by the regulations applicable to Class 'D' Controlled Airspace. Non-radio aircraft strictly PPR.

High visibility clothing mandatory on aprons and manoeuvring areas.

Handling is mandatory for all aircraft requiring access to the Main Apron via; Menzies Aviation Ltd, Tel: 01624 825780, Fax: 01624 825822, Freq 129.750.

The Private Jet Company Ltd, Tel: 01624 824555. > 3000 kg.

Light Aircraft handling by 3 Legs Aviation Services Ltd, Tel: 07555 135443, Email: info@3legsaviationservices.com

Owing to high ground to the left of the approach for Rwy 21, pilots must establish on the runway extended centreline before descending on the PAPI glidepath.

Due to a public road in the undershoot area of Rwy 03, approaches to this runway are not permitted if the PAPIs are out of service.

Simulated engine failure on departure Rwy 26 not permitted.

Noise Abatement - When approaching to land on any runway, all aircraft shall intercept the final approach track at a minimum range of 2nm and shall not descend below the PAPI indicated approach.

All propeller driven aircraft climb straight ahead to 500ft (Jets 1000ft).

Do not commence any turns until having passed the aerodrome boundary.

Departing aircraft Rwy 26 shall climb straight ahead for 2nm before commencing any turn.

Note: All training flights require approval from ATC.**Warnings:** Windshear on short final Rwy 08 when wind from South East.

Beware that radio communications reception is poor below 3000ft amsl due to screening by high ground north of the controlled airspace. Do not enter IOM controlled airspace without ATC clearance. FIS available from Scottish Information 119.875. Runway 21 - Caution - Departing crew should be aware that kite surfing in the vicinity of the climb out is possible during daylight hours.

Increased bird activity due to coastal location. Bird scaring including the use of pyrotechnics, lethal control and lasers used regularly on the aerodrome.

VRPs and Prevention of Terrorism and Crime Act 2003 – See overleaf

**Visual Reference Points (VRPs) and
Prevention of Terrorism and Crime Act 2003**

Visual Reference Points

VRP	Co-ordinates
Laxey	N54 13.75 W004 24.10
Peel	N54 13.33 W004 41.50

Prevention of Terrorism and Crime Act 2003

Under the terms of the Anti-Terrorism and Crime Act 2003, pilots and passengers of private or charter aircraft who have come from or are going to the British Isles, must when requested to do so, make themselves available to be spoken to by an examining officer. In relation to all such flights, the pilot must fully complete a General Aviation Report.

Further details can be found here, General Aviation website:-

<https://www.gov.im/categories/tax-vat-and-your-money/customs-and-excise/general-aviation/>

Restaurant: Restaurant and Refreshments available. **Car Hire:** Available.

Fuel: 100LL, Jet A1. S.
Multi Service

Tel: 01624 821600 Airport Administration
Tel: 01624 827456 ATC
Tel: 01624 821641 MET
Fax: 01624 821611 Airport
Fax: 01624 821646 MET
Website: www.iom-airport.com