

EGBO (XVW)

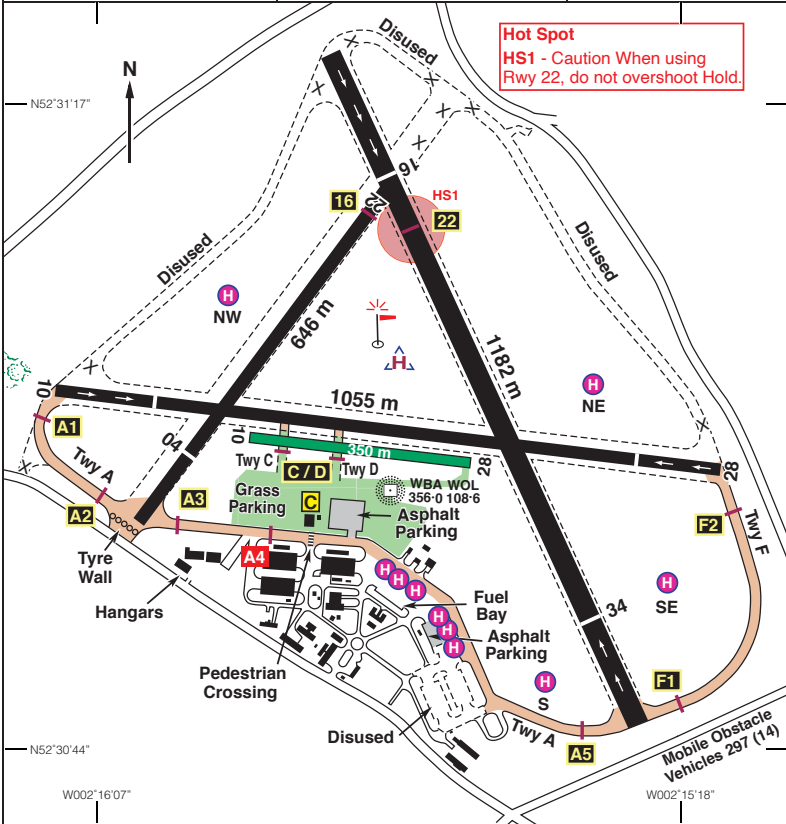
N52 31.07 W002 15.58 **WOLVERHAMPTON/Halfpenny Green** 283ft AMSL

5 nm SE of Bridgnorth.

HON 113-65 297 23-8

c/s Halfpenny Green Information 123-005 AFIS - Occasionally A/G

NDB 'WBA' 356-0 (On A/D) **DME 'WOL' 108-60 (On A/D)**



Hot Spot
HS1 - Caution When using
Rwy 22, do not overshoot Hold.

Rwy	Dim(m)	Surface	TORA(m)	LDA(m)	Lighting
04/22	646x18	Asphalt	04-646	04-515	Nil
			22-515	22-616	Nil
10/28	350x18	Grass	Unlicensed		Nil
10/28	1055x18	Asphalt	10-799	10-799	Nil
			28-799	28-799	Nil
16/34	1182x30	Asphalt	16-1025	16-858	Thr Rwy PAPI 3.5°
			34-1096	34-910	Thr Rwy PAPI 3.5°
					I Bn 'WBA' Gn

EGBO (XVW)

N52 31.07 W002 15.58 **WOLVERHAMPTON/Halfpenny Green** 283ft AMSL

Op hrs: PPR. Winter: 0900-1700. Summer: 0900-1800 daily.

Landing Fee: 0-600kg £10; 601-1699kg £15; 1700-2999kg £27; 3000-3999kg £65.

Customs: By arrangement during published hours via AFIS Fax or E-mail.

Hangarage: Limited.

Maintenance: Available.

Remarks: Operated by Wolverhampton Airport Ltd., Wolverhampton Airport, Stourbridge, West Midlands DY7 5DY.

High visibility clothing is recommended airside.

Pilots are responsible for their passengers whilst airside.

Only Rwy 16/34 licensed for night use.

Rwy 16/34 shallow depression on the eastern edge of Rwy close to Rwy 34 PAPIs will hold water after rain. Rwy 16/34 shallow depression crosses the runway north of Rwy 34 thld.

Taxi speeds are to be kept to a minimum. Parts of taxiways A & F are undulating and pilots are to take special care by the pedestrian crossing opposite the Control Tower.

Runways 04/22 & 10/28 use restricted to non jet aircraft less than 2 tonnes.

Circuits: Fixed-wing at 1000ft QFE, all LH; Rotary at 800ft QFE, all RH.

Autogyros are to fly the standard fixed wing circuits and profile.

Prefix callsign with "Gyro".

Joining: The standard fixed wing join is overhead. Aircraft should not descend below 1300ft QFE on the deadside due to the helicopter circuit.

Hovering helicopters shall maintain a distance of 60m from any active runway or taxiway, fence-lines, buildings and public viewing area.

Helicopters taxiing to the fuel pads are asked to operate their aircraft so as to minimise the effect of their downdraft on the nearby hangars.

Noise Abatement: Runway 16: All departures at the airfield boundary should make a track change of 10 degrees to the right. No left turns are to be made below 600ft QFE. No direct overflights of Highgate Farm are permitted.

Runway 34: No FANSTOP are permitted until passed Whittimere Farm, 1000 m beyond end of runway. Traffic turning left into the visual circuit are to avoid direct overflights of Claverley and Bobbington Village.

Runway 28/10: Departures, approaches and visual circuits are to avoid direct overflights of Bobbington Village and Primary school.

All visual circuits are to be completed within the ATZ.

Warnings: Helicopters are not to hover within 50m of the DME/NDB Masts.

Restaurants: Cafe open daily.

Taxis: Tel: 01384 404040, Tel: 01902 898080.

Fuel: 100LL, Jet A1 (FSII on request), UL91.

Fuel Bay operates a one-way system, entry at west end, exit at east, aircraft to draw up with pumps on starboard side.

Tel: 01384 221378 AFIS.

Tel: 01384 221350 Airport Admin.

Fax: 01384 221514 AFIS.

Fax: 01384 221328 Airport Admin.

Email: atc@wolverhamptonairport.co.uk

Website: www.wolverhamptonairport.co.uk